

Kindly view horizontally for
a better experience

 ORYZA
JAGLAX HOMES



Iconic in design. Tranquil in feeling. Care beyond measure.



Fields facing Oryza by Jaglax Homes in Siolim





Iconic in design. Tranquil in feeling. Care beyond measure.

ABOUT JAGLAX HOMES

Jaglux Homes has been building breathtaking holiday homes in Goa since 2017. So far, we have built 15 luxury homes with 21 more in the pipeline. Our process starts with selecting clearly titled land parcels and ends with our in-house team carefully arranging the silverware on your table. In other words, we bring a home to life in its entirety. Drawing from the minimalist coastal architecture in Australia and fresh-faced modern aesthetics, each house is a result of expert craftsmanship, detailing and wholehearted attention. Set amidst picturesque foliage, our homes offer unmatched privacy and calm, that bring you closer to the undisturbed nature, tropical sunshine and coastal breeze.





Iconic in design. Tranquil in feeling. Care beyond measure.

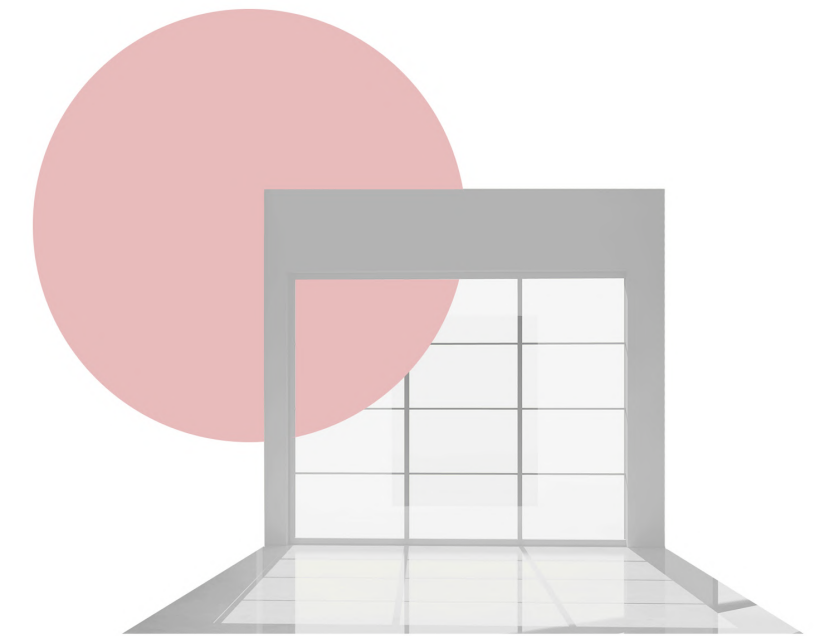
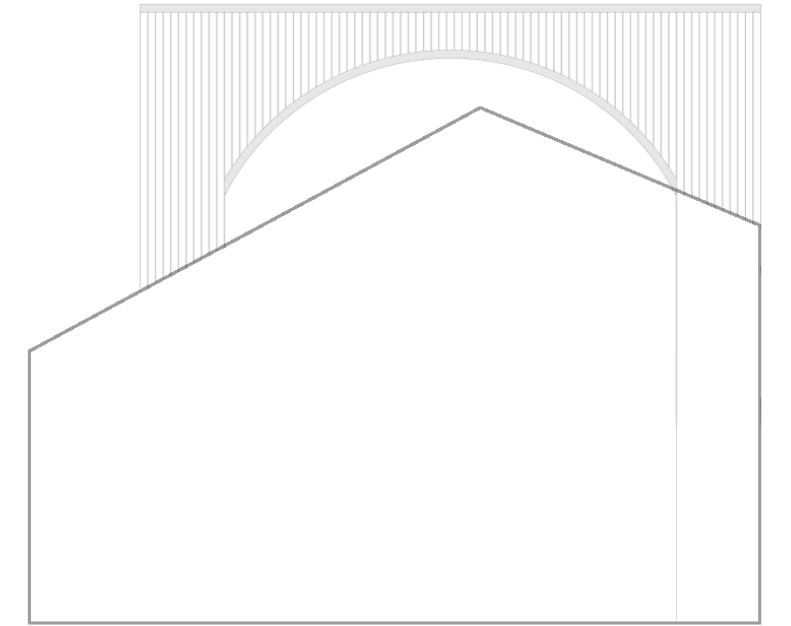




Iconic in design. Tranquil in feeling. Care beyond measure.

DISCOVER ORYZA BY JAGLAX HOMES

The name 'Oryza' (rice) is an ode to the rice fields surrounding the six tranquil holiday homes in this gated community in Siolim. The homes, being a short stroll away from the Chapora river and having picturesque views of paddy fields, seek design inspiration from the surrounding nature to conjure truly meditative spaces that allow dwellers to unwind and experience a relaxation of the highest form.

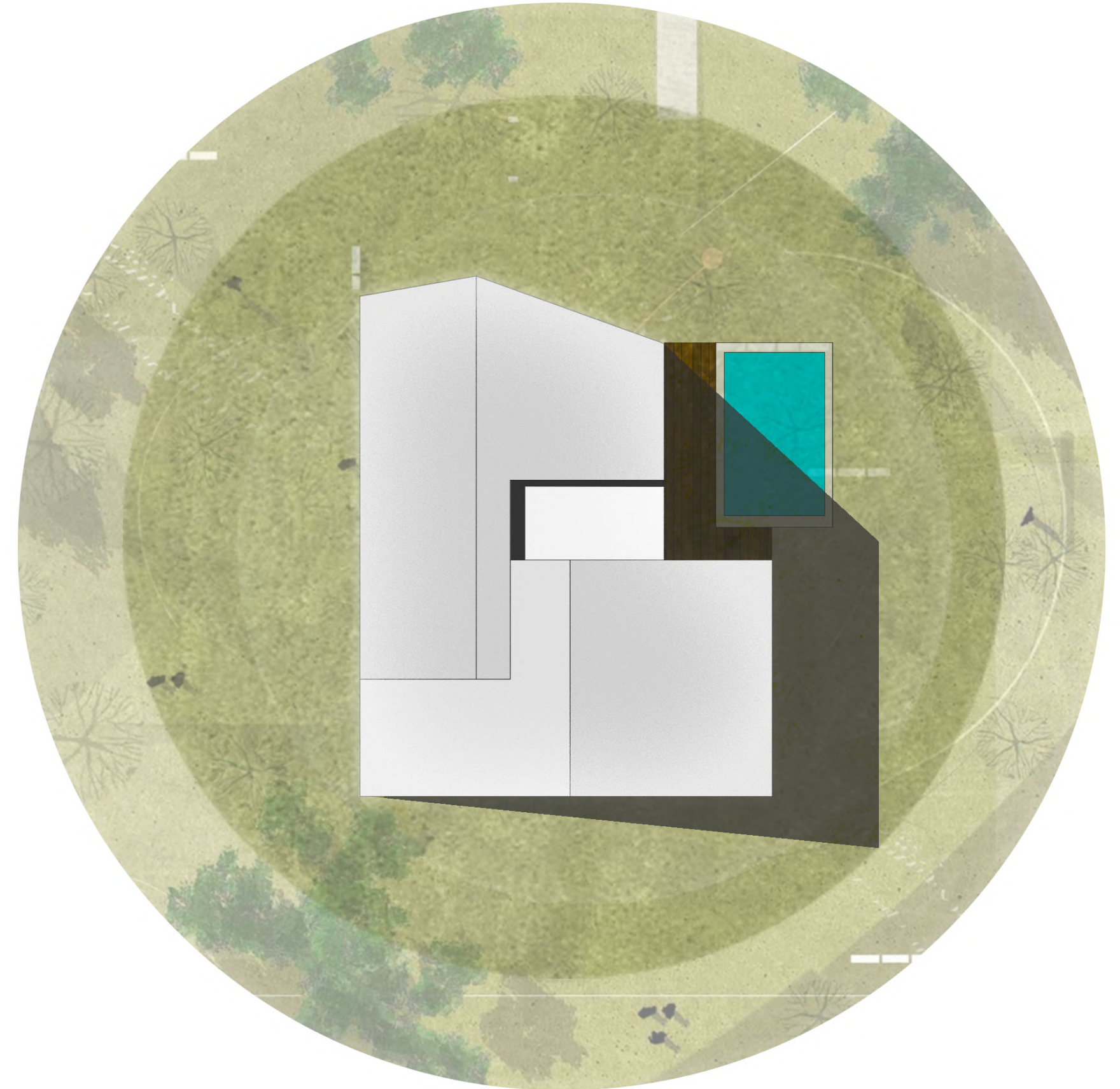




Iconic in design. Tranquil in feeling. Care beyond measure.

ARCHITECTURE

Drawing from the rudiments of Australian architecture, Oryza features inward-looking 'L' shaped villas that overlook the private garden and pool areas from within the homes. Each villa comes with three bedrooms and an attic, spread across ground + two storeys.





Iconic in design. Tranquil in feeling. Care beyond measure.



The façade makes use of linear forms and clean lines to make a contemporary entry statement. The large cantilever, vertical louvres in the front, louvered arches on the sides and the Georgian bar windows define the homes' character.





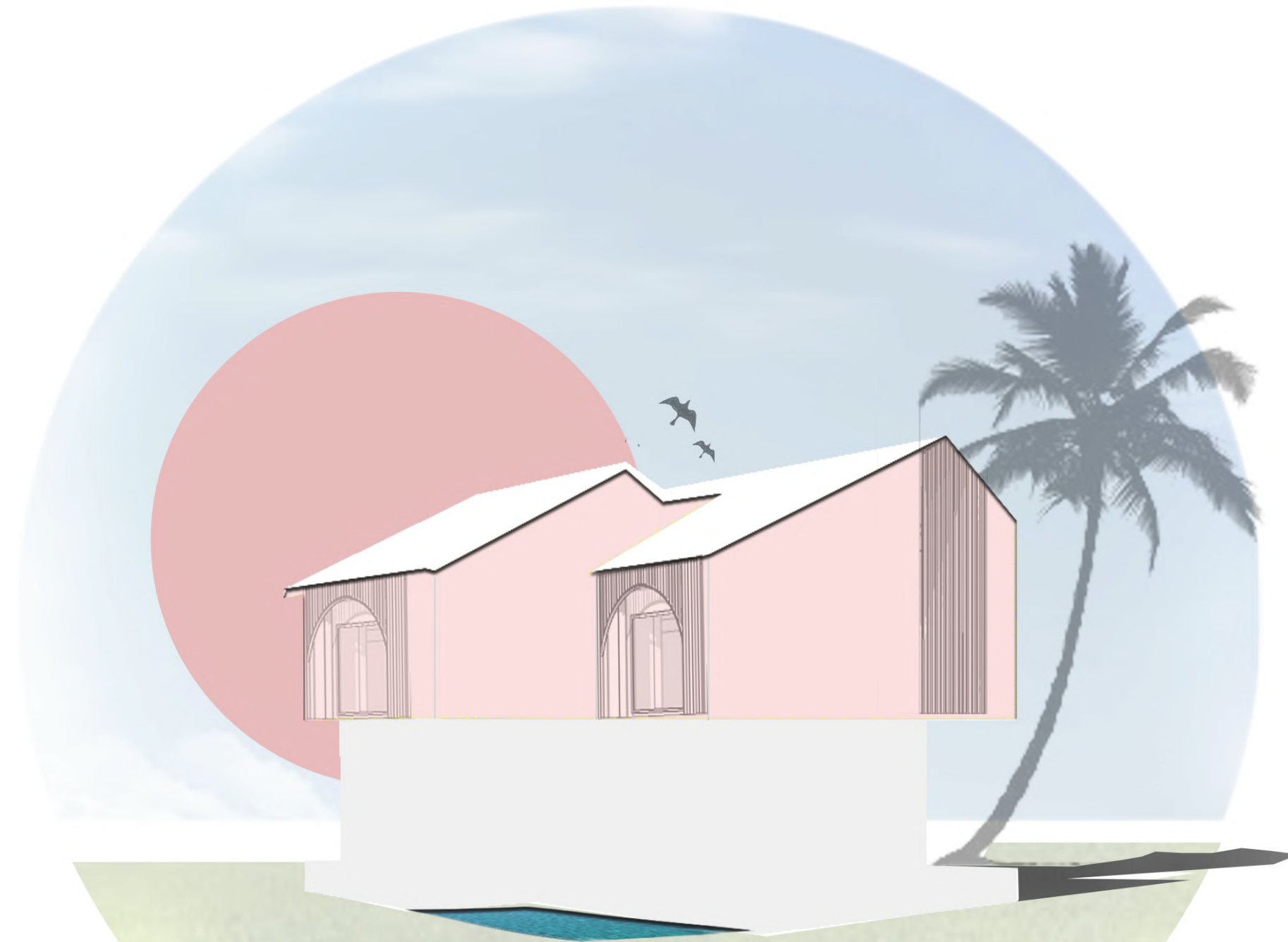
Iconic in design. Tranquil in feeling. Care beyond measure.

To exude the calmness of a holiday home and complement the surrounding foliage, the villas make use of white on the exteriors.





Iconic in design. Tranquil in feeling. Care beyond measure.



The villas' positioning is done to ensure that Oryza enjoys views of the surrounding fields, while maintaining privacy from one another.





Iconic in design. Tranquil in feeling. Care beyond measure.



LANDSCAPE DESIGN

The landscape design at Oryza has weaved itself within the architecture, interiors and surrounding nature to forge a bond between these elements. The villas spread across a plot area of approximately 2900 sqm get nearly 60% of open areas, which include the pool, garden and parking spaces.





Iconic in design. Tranquil in feeling. Care beyond measure.





Iconic in design. Tranquil in feeling. Care beyond measure.

INTERIORS

The zen state inside our homes results from an amalgamation of textures, materials and tones derived from natural elements. The colour of harvested rice inspires the use of white oak wood, and the river beds influence the use of light grey floorings. The designs use pebbles, hemp and jute that collectively maintain a calm atmosphere. The white walls in the backdrop offer a sense of tranquillity.



Iconic in design. Tranquil in feeling. Care beyond measure.



The living area features a sunken lounge that allows dwellers to sit at eye level with the pool and garden. This setting ensures a barrier-free view of the outside from across the floor.



Iconic in design. Tranquil in feeling. Care beyond measure.



Combined with acute double-pitched roofs and large windows, it also creates a sense of spaciousness within the homes.





Iconic in design. Tranquil in feeling. Care beyond measure.

We have used a controlled monochromatic palette that allows the spaces to connect seamlessly.





Iconic in design. Tranquil in feeling. Care beyond measure.



Despite the mono-tonal approach, every room is made distinctive through the design elements.





Iconic in design. Tranquil in feeling. Care beyond measure.

The use of curves across spaces accentuates the feeling of softness and derives a calming effect. This curve detailing extends across Oryza's aesthetics to create a visual rhythm and synchronise the design elements.





Iconic in design. Tranquil in feeling. Care beyond measure.





Iconic in design. Tranquil in feeling. Care beyond measure.



The soaring roof of every villa has further facilitated an attic bedroom that piques interest as a lively space for relaxation. The homes also showcase generous windows that draw natural light to build light, calm and immersive spaces.





Iconic in design. Tranquil in feeling. Care beyond measure.

SITE PLAN

Villa Sizes:

181 sq mtr
Carpet area

265 sq mtr
Built-up area

180 sq mtr
Open spaces

(Includes garden, car park & pool)



*The sizes are approximate and vary for each villa.





Iconic in design. Tranquil in feeling. Care beyond measure.



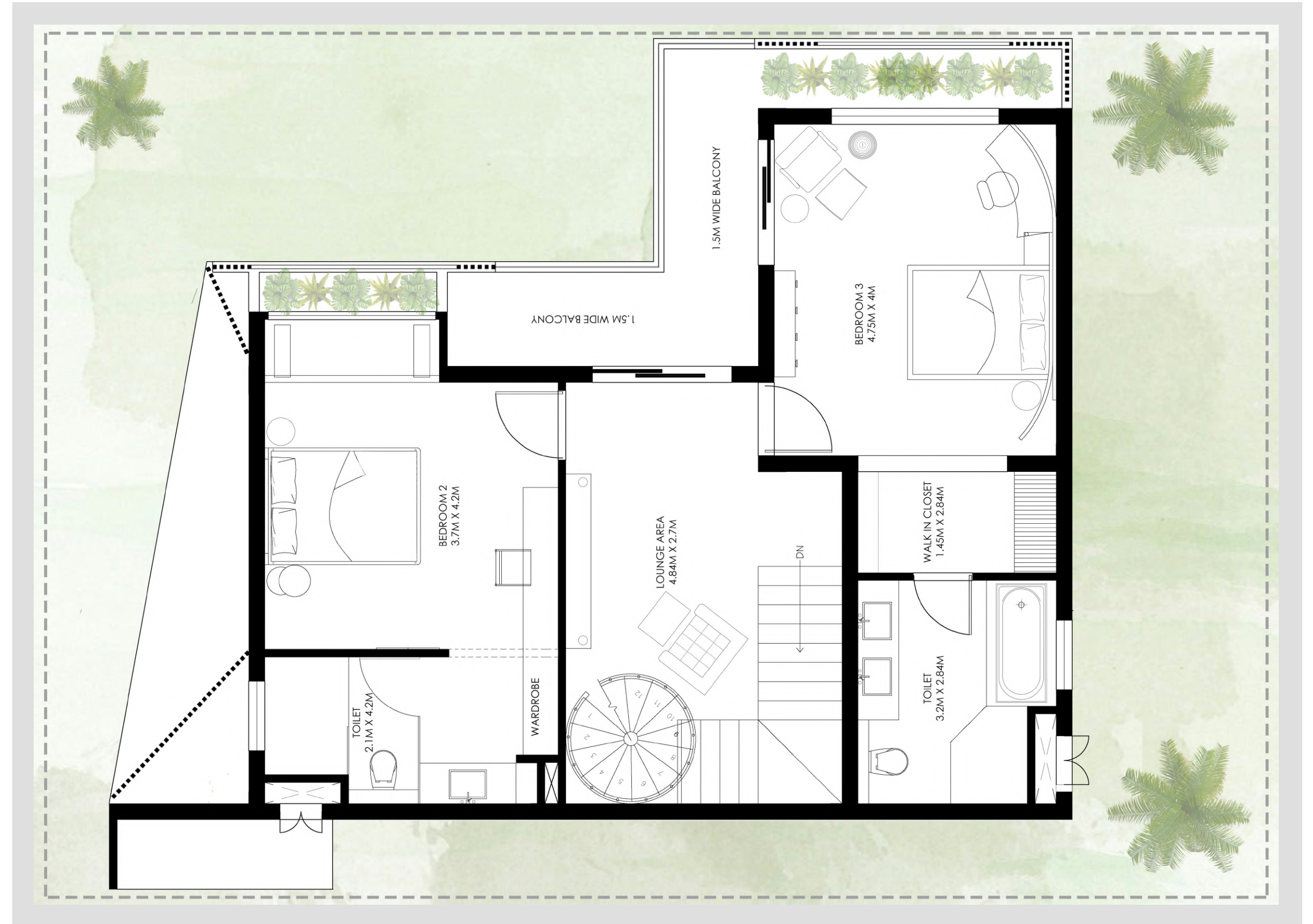
GROUND FLOOR PLAN





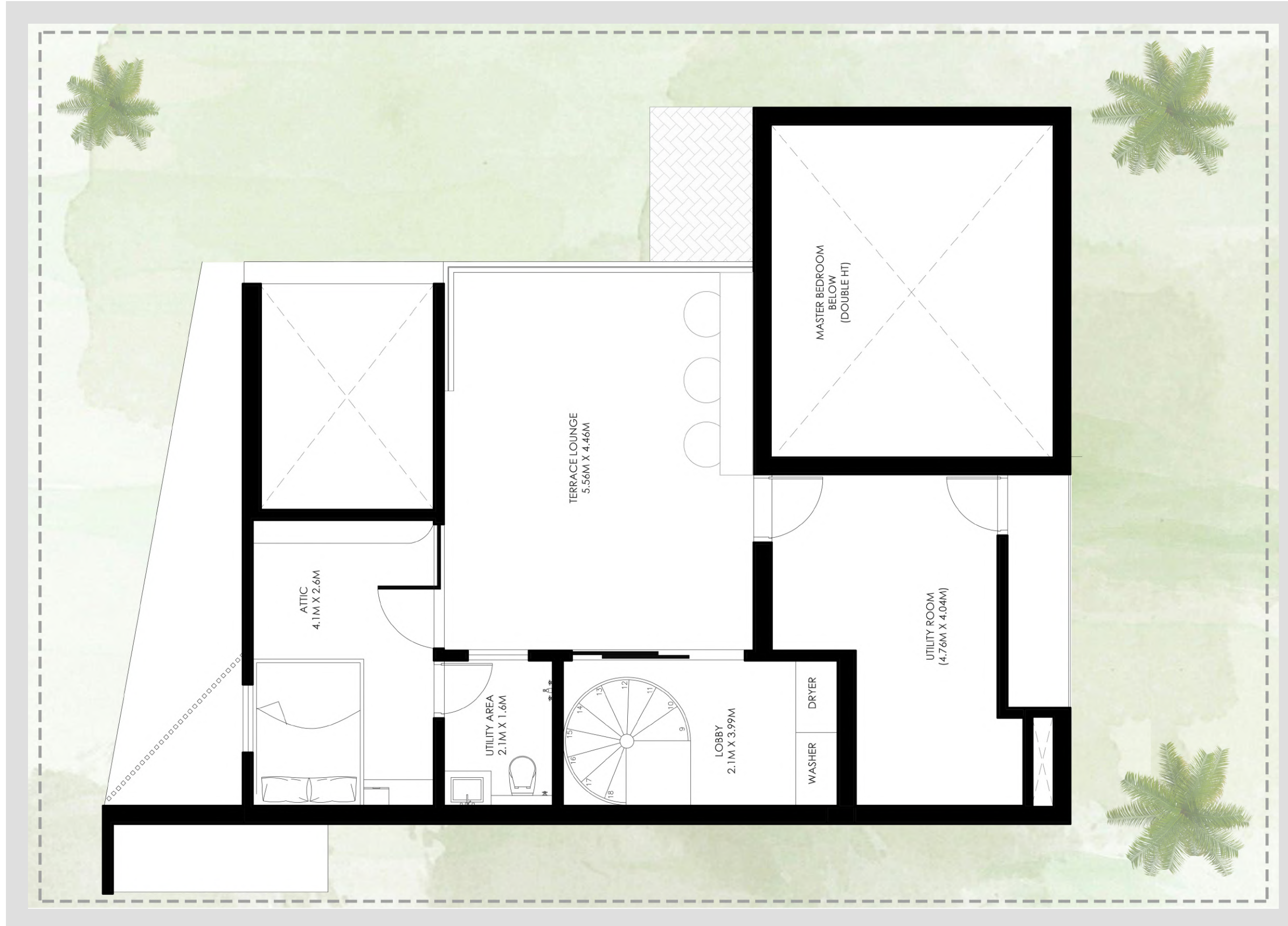
Iconic in design. Tranquil in feeling. Care beyond measure.

FIRST FLOOR PLAN





Iconic in design. Tranquil in feeling. Care beyond measure.



SECOND FLOOR PLAN



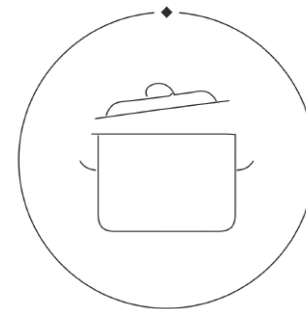


Iconic in design. Tranquil in feeling. Care beyond measure.

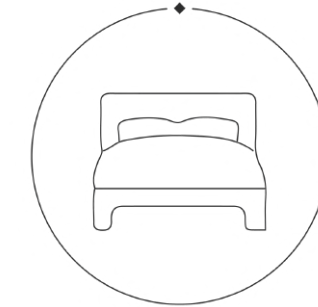
KNOW YOUR VILLA



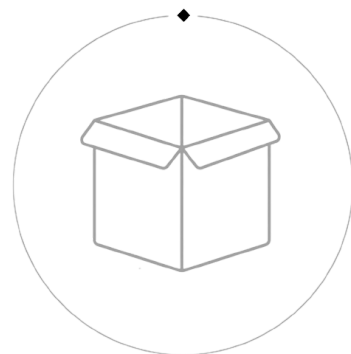
Fully furnished two storied villa with an
attic floor



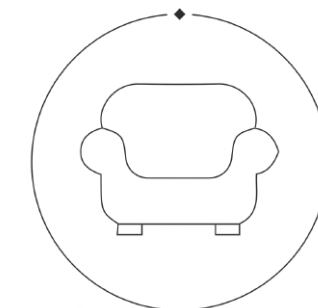
Open living, dining and kitchen areas
with an Australian style kitchen island
on the ground floor



Three bedrooms with ensuite baths +
One loft bedroom on the attic floor



A utility room on the attic floor



Customised furniture and high quality
electronics



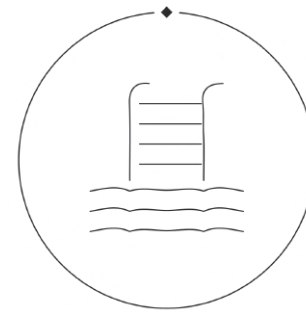


Iconic in design. Tranquil in feeling. Care beyond measure.

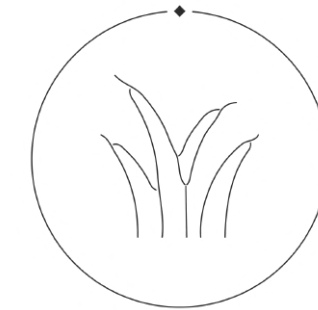
KNOW YOUR VILLA



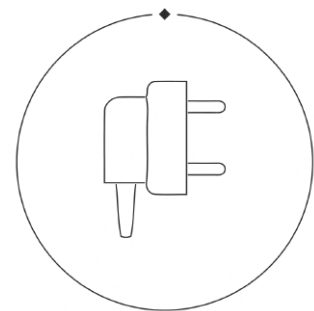
A private car park



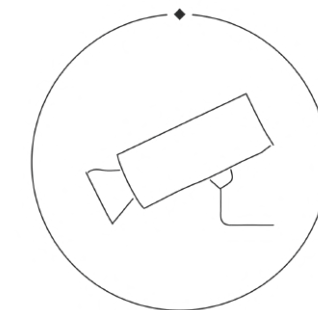
A private pool with a covered deck



Open garden space surrounded by lush
green foliage



100% power backup for all heavy
appliances



Safe gated community with a security
cabin, personnel and CCTV system



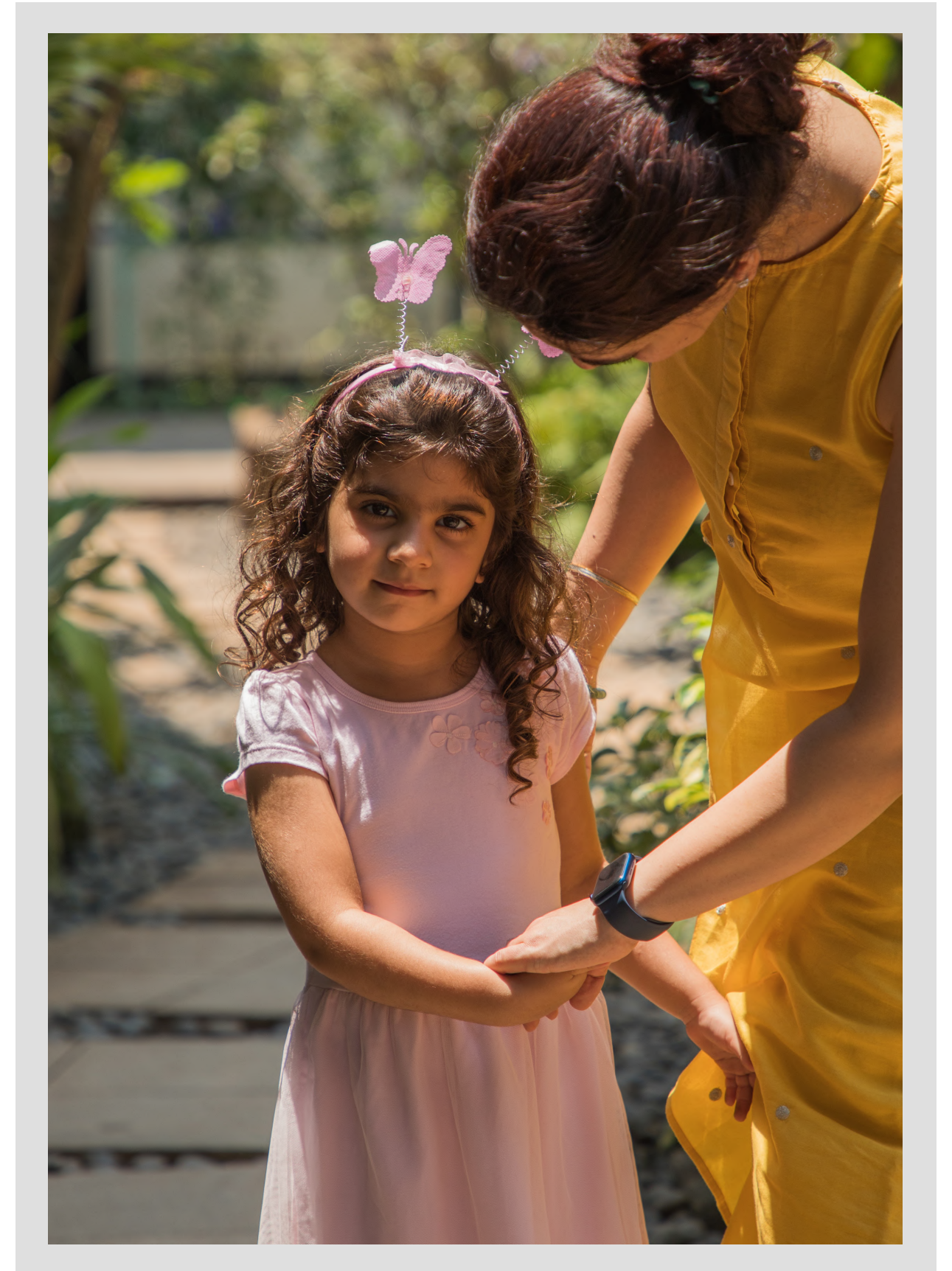


Iconic in design. Tranquil in feeling. Care beyond measure.

BE OUR GUEST

The hospitality service across our holiday homes stems from our endeavour to provide a great return to our buyers through vacation rental income; while keeping the homes well-maintained throughout the year.

Our thoughtful hospitality has led us to serve over 8,000 happy guests since 2019. As of today, more than 60% of our guests are people who have stayed with us in the past.





Iconic in design. Tranquil in feeling. Care beyond measure.

THE HOSPITALITY TEAM

Estate manager

Guest relationship manager

Villa attendant

Pool maintenance executive

Mechanical, electrical and plumbing personnel

Gardener

24X7 security personnel

CONCIERGE SERVICES

Airport pickup and drop

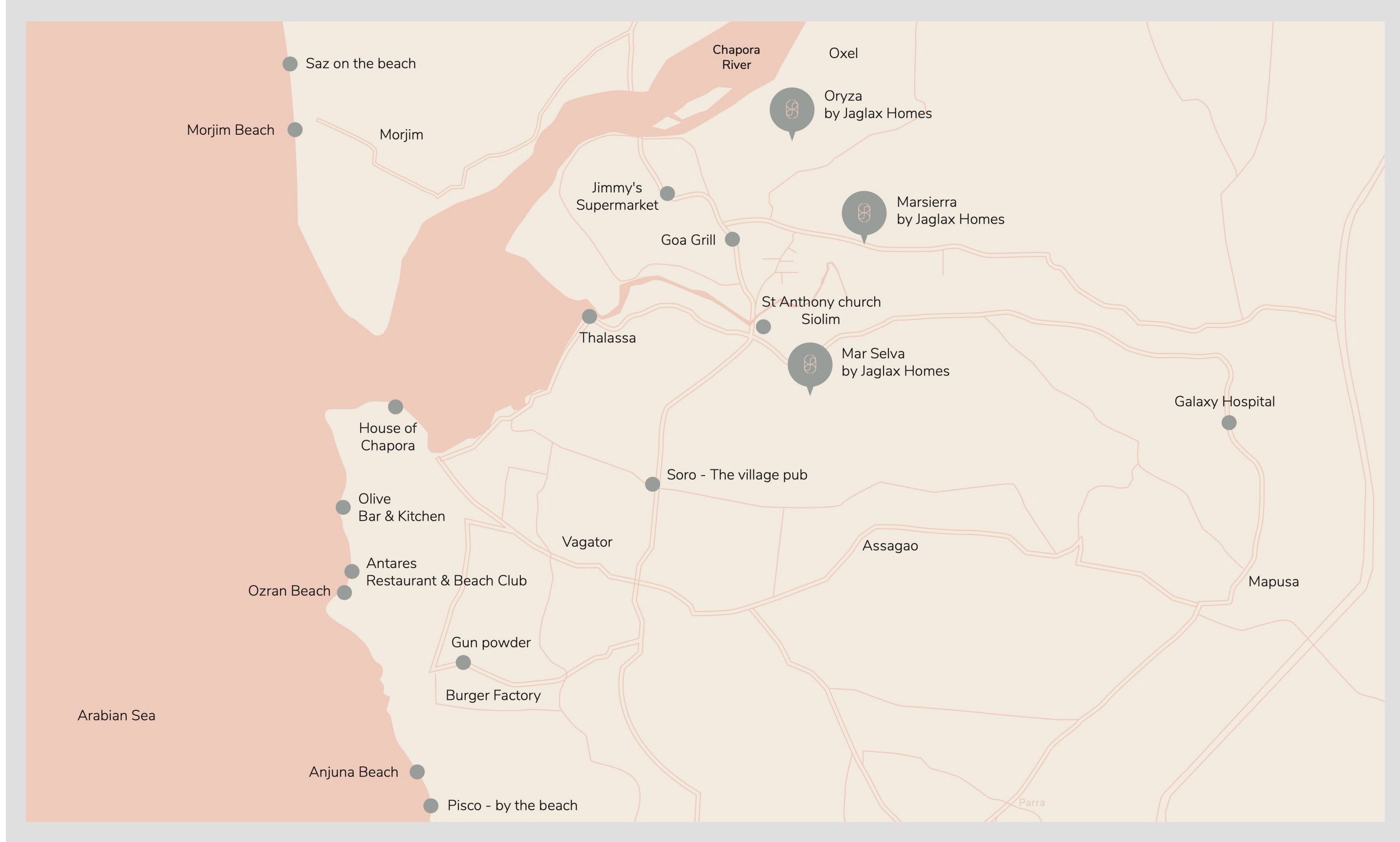
Restaurant reservations

Chef-on-call

Organising leisure activities

Organising events for special occasions







Iconic in design. Tranquil in feeling. Care beyond measure.

LIFE IN SIOLIM

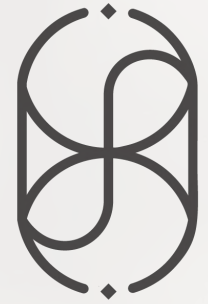
Siolim is a quaint and laid-back riverside village in North Goa. It lies between two pristine beaches, Vagator and Morjim, where one can reach post a short drive of 15 minutes. It is known to be among North Goa's most green, open and serene locations and is home to ample well-known restaurants, cafes and clubs. One can easily find essential services such as ATMs, supermarkets and hospitals in the locality. With its proximity to the Dabolim international airport (55 minutes drive) and the upcoming Mopa airport (40 minutes drive), Siolim is now more accessible than ever, making it one of the most sought-after destinations for holiday homes in Goa.





Iconic in design. Tranquil in feeling. Care beyond measure.





JAGLAX

HOMES

RERA No. PRG010221805 | Office: 448/6 Pilimbi Vaddo Sodiem Siolim Bardez Goa 403517 | Ph: 9321558752